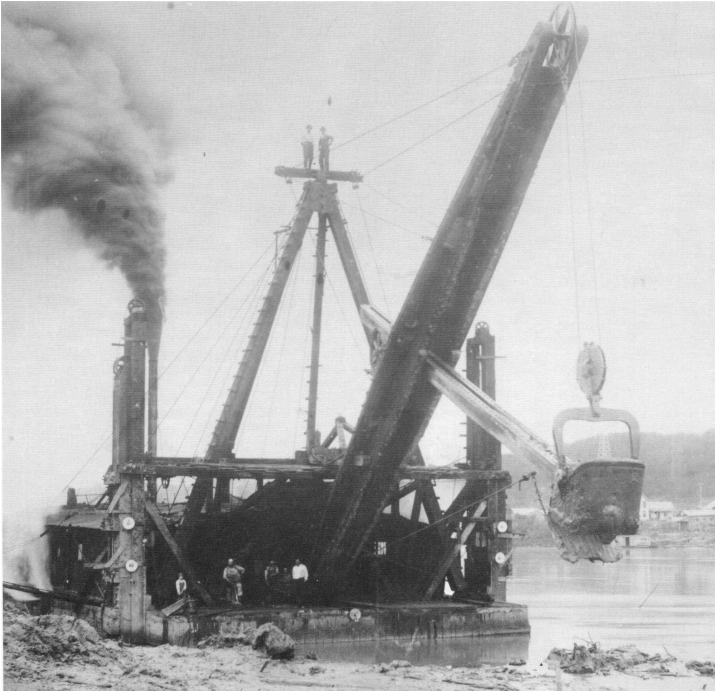


**BOARD OF COMMISSIONERS  
SNY ISLAND LEVEE DRAINAGE DISTRICT**

**2006 ANNUAL NEWSLETTER**

**SNY**



SNY. What an interesting word! What does it mean? Where did it come from? For those of you who don't know, ever wonder? About 13 years ago, the Sny Island Levee Drainage District put together a booklet that contained information about the history of the District, its various facilities, details on the daily operation of the Sny along with a number of photos. Please note the following from that publication. "The term 'Sny' refers to a natural stream that was a former arm of the Mississippi River which originally entered the Sny

Basin about six miles north of Hannibal, Missouri, and meandered generally about midway between the River and the bluffs for some 56 miles before emptying into Hamburg Bay. (The photo above is the dredge Colonel Matthews purchased by the District in the early 1900's working in the Sny channel near Hamburg Bay.) The stream was originally named 'Chenal E'Carte' by the early French explorers but in English was called 'Sny' for short from the French pronunciation of 'Chenal'. The French meaning of 'Chenal E'Carte' varies according to different sources of information, one meaning being 'lost or crooked stream'. Early maps of the stream indicate the name 'Sni E'Carte' was also used. Present day maps use the name 'Sny Channel' to describe the same stream." But when you really stop to think about it the Sny means much more than "lost or crooked stream". It symbolizes economic vitality, optimism, hope, dreams, sacrifice, dedication and on and on. The "Sny" is revered, respected and a tower of strength in this region of the country. We owe so much to those who came before us with a vision of what the Sny could truly become. They laid the foundation of opportunity so that we might thrive and grow today. It's now our job to take care of and improve upon what has been given to us and pass it along to future generations. After all, the Sny represents much more than a drainage system, agriculture, pump stations, basins, ditches, creeks, etc. The Sny is to be respected, cared for and nurtured. **THE SNY IS A WAY OF LIFE!**

## FIELD WORK



In 2006, more than 15 miles of District ditches, including the approach channels to Ambrosia and Howell Basins, were cleaned. Field work included projects in Reaches I, II & IV. Pictured on the left is the maintenance of the upper end of Emoritt Lake Ditch in Reach IV. In addition,

the clean out of 1.75 miles of the north end of the Sny channel in Reach IV that began in the summer of 2005 was wrapped up this past spring. Vital to bringing this project to a successful conclusion was the tremendous cooperation extended to the Sny staff by the

Alton Woodrider Sportsman's Club and Muddy Rivers Lodge. Both of these landowners worked tirelessly in an effort to assist the Sny staff in completing the excavation of the channel to improve the drainage in Reach IV for all their landowner neighbors. Some clean-up remains for the Sny staff to work on this winter, but all in all, this project was a huge



success. Such is the case with the maintenance of all of our waterways. Landowner input is essential. With more than 265 miles of "District Ditches" in the system, it's impossible for the Sny staff to monitor the effectiveness of their drainage. We rely on the landowners to monitor the condition of the "District Ditches" on and adjacent to their farms much as they monitor the condition of their crops to check for drainage problems.

If problems are found, please notify the Sny Business Office so the area can be checked and required maintenance work scheduled. Another part of the success of projects such as these goes to our heavy equipment operators. Scott McKee, a 6 year veteran of the Sny staff, handles most of the work on the District's Cat 350L track hoe while Willard Lynch, with 19 years of experience with the Sny, takes care of the bulk of the dozer work with the Sny's D6R.



A key component of efficient drainage often overlooked in the field is brush control on ditch banks. The Sny's brush control program involves two components; the proper application of herbicides to effectively control the brush population along with the mowing of brush with the District's Alamo Brush Axe. If not properly controlled, brush will shade over the ditch banks severely impeding the growth of grasses. With inadequate grass cover comes increased ditch bank erosion causing sediment to accumulate in the bottom of the ditch. Left unattended, over time less than efficient drainage develops. To facilitate brush control along "District Ditches", several years ago the Sny implemented a program that allowed landowners to secure herbicide from local vendors at the District's expense. In return, the Sny asked that the landowners apply the herbicide to control the brush along "District Ditches" located on their property. This continues to be quite effective throughout the District. In 2006, the District spent nearly \$10,000.00 on this program. However, when the brush population becomes excessive, the Sny staff uses the Alamo Brush Axe attached to one of the District's John Deere 7710 tractors to mow it off. Brad Bess, the District's Resident Pump Station Operator at Pump Station IV handles this part of the brush control operation during the winter months.





Brad also manages the Sny's levee mowing program during the summer and fall. With nearly 200 miles of levees to mow along with more than 265 miles of waterways, you can imagine how busy Brad is throughout the year. Brad typically will initiate the mowing of the levees in late June with the work to last throughout the year into December. Pictured

above is the Sny's new Bush Hog 3715 mowing unit purchased this past year. This unit replaced a 1993 model 3615 Bush Hog that had given the Sny many good years of service. The Sny also uses its other John Deere 7710 with a John Deere CX 20 mowing unit. Paul Kenady and Kevin Keithly, part time employees of the District, assist with the levee-mowing program on this equipment.

## PUMP STATIONS

We experienced a fairly uneventful year at the Sny's three pump stations this year. Total pumping hours at all locations this past year was 1,714.7.

For the first time in many, many years we did not run Pump Station #1 at Hull all year other than for routine maintenance checks. Sny elevations in Reach I last year did not dictate the need for running the pumps. However,

**Pump Station 1 - Hull**



Bryan Chapman, our Resident Pump Station Operator at Pump Station 1, was kept busy all year. Routine maintenance is necessary throughout the year regardless of whether the pumps are run or not. Bryan also assisted at Pump Station 3A throughout the summer. In addition to his pump station responsibilities, Bryan also managed the Pittsfield Work Camp crew assigned to the District at least three-days-per-week throughout the summer and usually five-days-per-week during the winter. The Pittsfield Work Camp Program has provided the District with valuable assistance for many years. The crews assists the staff with cleaning brush from riprap, clearing brush on ditches as well as mowing and maintenance of District grounds.



In January of 2006, we completed the overhaul of engine #1 at Pump Station 3A. This ended a two year program costing

nearly \$200,000.00 where all three engines at Pump Station 3A were completely overhauled. Total hours of operation at Pump Station 3A for 2006 were 1,111.7.

Another major project completed last year near Pump Station 3A that is a tremendous benefit to the District is the new Sny bridge just upstream from the pump station. Picture above is the new bridge on the right located along side the old bridge that was being demolished. A big thank you to Barry Webster and his Calhoun County Highway Department staff for completing this structure for the benefit of entire District.

Brad Bess, our Resident Pump Station Operator at Pump Station 4 south of Pleasant Hill completed his second pumping season at the facility this past year. Brad had a total of 603 hours of operation in 2006. Some routine repairs are scheduled for the winter in advance of our 2007 operation, but all in all, Pump Station 4 is in excellent shape for the coming year.





It also should be mentioned that a great deal of the success with the District's pump station operations goes to our part time staff. Our operation would not be nearly as effective were it not for the dedicated hard work of our part timers. They include the following: Pump Station 1 – Paul Kenady, Kevin Keithly and Howard Hubbard; Pump Station 3A – Earl Fry, Steve Herron, Jarrod Herron, Mark Boren and Lyndle Scranton; Pump Station 4 – John Springer, Mike Clendenny, Dewey Davis and Calvin Anderson.

## DISTRICT DREDGING OPERATION

We got an early start to dredging in 2006 with operations commencing in April at the south end of Reach II. 1.7 miles remained to be completed at the south end of the Reach before operations could be moved north to complete the final .8 of a mile section just south of the Cincinnati Landing river levee ramp. The south end of the Reach was completed in mid-August. The dredge, booster pump and 7,000' of discharge pipe were then moved about five miles north to be re-assembled for the final push to complete Reach II. The dredge,



discharge pipe and fuel tanks along with the work barge were moved by Sny staff. The Sny enlisted the services of Blick's Construction of Quincy, Illinois, to move the booster pump and sled weighing nearly 42,000 lb. Rather than pull the booster pump on its sled the 5-mile distance, it was lifted on the Sny's lowboy with Blick's 50-ton hydraulic



crane. It was then hauled to the Cincinnati Landing site and off-loaded using the same crane. Upon re-assembling the entire operation in the Cincinnati Landing area, dredging operations began again in late August. An additional 1,000' of discharge pipe was also purchased to facilitate the completion of the project from the current dredge site in the area of Mallard Drake Crossing. When fully assembled, the dredge operation is moving material nearly 7,800' from the dredge site

to the discharge site. As of this writing, approximately 1,000' remains to be filled before



Reach II is complete.

Dredging operations are currently shutdown due to the recent onset of winter weather.

However, all the equipment is assembled to allow for immediate start-up should a warming trend develop.

Upon completing operations in Reach II either yet this winter or early next spring, the dredging operation will move north to Reach I for start-up next year.

We are currently in the

permitting phase for Reach I with nine dredge sites being requested for the area north of Lock & Dam 22. The state mandate requiring mussel surveys for each requested site has been completed at a cost of approximately \$21,000.00. We are optimistic that the appropriate permits will be secured and work will commence in the spring. In reviewing progress made on levee improvements since the Great Flood of 1993, it is important to note that upon the completion of Reach II, the Sny will have significantly improved 11.25 miles of the main stem Mississippi River levee.

## **MISSISSIPPI RIVER COMMISSION**

In reviewing the history of this drainage district, noteworthy events occur periodically that just don't happen in too many other places. The Sny, with roots dating back to 1872, was the first levee and drainage district in the State of Illinois with drainage law having been developed in the State as a result of efforts by Sny advocates. A massive Federal effort known as The Sny Project was undertaken in the late 1950's. This multi-million dollar project included the construction of three large pump stations, channelization of five major creeks directly to the river and construction of numerous sedimentation basins. The purchase of the Sny dredge about 3 ½ years ago was an unparalleled event for any levee and drainage district in the upper Mississippi Valley. The securing of permits for the Sny's dredging program was thought to be impossible at the time. In November of 2003, the achievement of re-certification of the Sny from a 50-year level of protection to a system providing 100-year flood protection from the Mississippi River was the largest ever done in the United States. And, true to form, on August 17, 2006, the Sny received the honor of hosting the prestigious Mississippi River Commission for a tour of the District. It was reported that this was the first visit to the Sny by the Commission in 100 years.





The Mississippi River Commission was formed on June 28, 1879 by the Congress of the United States. Member of the Commission are appointed by the President of the United States and confirmed by the Senate. It's current

members are Brigadier General Robert Crear, President of the Commission and Commander of the Mississippi Valley Division headquartered in Vicksburg, Mississippi; Rear Admiral Samuel DeBow of the National Oceanic and Atmospheric Administration headquartered in Silver Springs, Maryland; Brigadier General Gregg Martin, Commander of the Corps' Northwestern Division headquartered in Portland, Oregon; Brigadier General Bruce Berwick, Commander of the Corps' Great Lakes/Ohio River Division headquartered in Cincinnati, Ohio; Mr. Sam Angel, Civil Engineer of Lake Village, Arkansas; Mr. R.D. James, Civil Engineer from New Madrid, Missouri; and Mr. Clifford Smith, Civil Engineer of Houma, Louisiana. The Commission's task is to develop plans to improve the condition of the river, foster navigation, promote commerce and prevent destructive floods.





The Commission holds critical responsibilities in shaping federal policy for the river. The group came to inspect the results of a cooperative program between the Sny and the Rock Island District U.S. Army Corps of Engineers that provided for the placement of sand dredged by the Corps from the approaches to Lock & Dam 22 and placed on the land side slopes of the District's river levees in that area of Reach I. The Commission was also keenly interested in taking an overall look at the Sny, its impact on protecting inter- and intra-state commerce through its flood protection efforts for Interstate 72, Norfolk Southern rail line, U.S. 54 and the Gateway Western rail line. And most importantly, the Commission wanted to personally see the Sny's dredging project. The Sny tour began at the Public Use Area of Lock and Dam 22, then moved through Reaches I and II to the Sny's dredge discharge site located in the Leeds Landing area at the south end of Reach II. The Sny hosted the group for dinner that evening at Sprague's Kinderhook Lodge before the Commission boarded the Motor Vessel Mississippi V at Lock & Dam 24 in Clarksville to continue its trip down river.

### **SNY BUSINESS OFFICE**



The Sny's Business Office is at the heart of the District's operation in New Canton, Illinois. For nearly 12 years, District Superintendent Mike Reed has directed all daily activity for the Sny from the business end to field maintenance from this location. For almost seven years now, the Sny's

Administrative Assistant/G.I.S. Specialist Yvonne Billings has managed the business end of the District. Also assisting on a part time basis is Jane Guthrie along with Kevin Keithly, the District's Network Administrator. Throughout this time, much has been accomplished in modernizing the computer technology of the office that has allowed Yvonne to maintain ownership records as up-to-date as possible in the Sny's database. With more than 600 landowners and several thousand tracts of land in 10 Townships spanning 3 counties, the maintenance of accurate ownership records is a challenge. The most important component in insuring the accuracy of these records is you, the landowner. If you are involved in a land transaction, you or your representative is responsible for reporting the change to our Business Office. This will insure the accuracy

of your annual assessment. When you receive your annual assessment, check it to be sure it's correct. No one is more keenly aware of the land you own than you. If you suspect an error has occurred, don't hesitate to let us know. The Sny's annual assessment of nearly \$789,000.00, as noted above, is spread over 10 townships. The totals for each township are as follows: Fall Creek-Adams: \$31,158.92, Barry-Pike: \$926.84, Levee-Pike: \$98,543.84, Pleasant Hill-Pike: \$61,911.96, Cincinnati-Pike: \$100,296.56, Kinderhook-Pike: \$105,970.18, Atlas-Pike, \$137,800.48, Belleview-Calhoun: \$59,925.40, Pleasant Vale-Pike: \$78,133.70 and Ross-Pike: \$114,221.04.

### **TO MEET YOUR DRAINAGE SUPPLY NEEDS**

In our continuing effort to provide you with the drainage accessories you need to maintain optimal drainage of your land, we stock an inventory of galvanized and plastic drainage pipes along with flapgates. Our inventory consists of diameters ranging from 12" to 36" in 20' lengths. Larger sizes can be special ordered and delivered if your installation demands it. If your particular application requires lengths in 10' intervals, our staff will be happy to cut those for you. In addition to providing you with the proper drainage pipes, if our equipment happens to be in the immediate area of your project, we will install the tubes for you at no charge. We are happy to be able to provide you with this service, but

cannot be responsible for damage that may occur to the tubes during installation and will not guarantee it for proper flow. The Sny also cannot

be responsible for future damage that that may happen to the tube as a result of flow through it as well as damage to adjacent crops that may result from the installation. In addition, the tubes that we install need not be purchased from us, but must be new tubes. We do not install used tubes.



### **CRITTER CONTROL**

We have seen quite an increase in the beaver population in the District waterways in the past few years. These busy little creatures can wreak havoc on the best-laid drainage plans of anyone with the construction of well-engineered dams. To combat this, the Sny, in cooperation with the Illinois Department of Natural Resources, has enlisted the services of





a number of trappers located throughout the District to trap the little demons. If you notice a problem in your area, please call us immediately. Our staff will work with our local trappers to remove the beaver from the area as well as get rid of their dam. Last year alone, our trappers caught and disposed of more than 100 beaver from the District.

**HO! HO! HO!**  
**T'IS THE SEASON!**



In observance of the upcoming holiday season, the Sny Business Office will be closed December 25 and 26 and January 1 and 2.

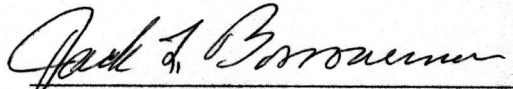
We also want to thank you for your continued support throughout the year and wish you all the happiness that the holiday season stands for. Please be safe in


your travels and best wishes for a prosperous new year.

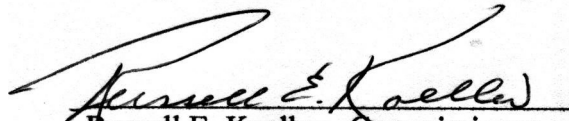
**FINANCIAL STATEMENT**

The financial report included with this year's newsletter reflects audited figures for the fiscal year ending October 31, 2005.

If you would like to access this year's newsletter electronically, it can be found in PDF format at <http://www.snyisland.org/newsletter.htm>

  
Jack L. Borrowman – President

  
George D. Borrowman – Secretary

  
Russell E. Koeller - Commissioner

**SNY ISLAND LEVEE DRAINAGE DISTRICT**  
**STATEMENT OF REVENUES, EXPENDITURES, AND CHANGES IN FUND BALANCES**  
**GOVERNMENTAL FUNDS**  
**YEAR ENDED OCTOBER 31, 2005**

	General Annual Maintenance	Capital Projects Fund Reserve fund Fall Creek	Permanent Fund Reserve Fund Seepage	Total Governmental Funds
<b>REVENUES</b>				
Assessments	\$ 786 678	\$	\$	\$ 786 678
Material and pipe sales	33 656			33 656
Lease income	13 200			13 200
Farm income	28 876			28 876
Investment earnings	18 630	10 265	34 576	63 471
Miscellaneous	1 850			1 850
Total revenue	<u>882 890</u>	<u>10 265</u>	<u>34 576</u>	<u>927 731</u>
<b>EXPENDITURES</b>				
Current:				
General administration				
Payroll	95 936			95 936
Office supplies	8 188			8 188
Building utilities and maintenance	15 778			15 778
Insurance	75 214			75 214
Legal and audit	38 199			38 199
Engineering	109			109
Farm expense	58 111			58 111
Miscellaneous	14 302			14 302
Pumping Operations				
Payroll	114 627			114 627
Operating expenses	242 089			242 089
Heavy Equipment Operations				
Payroll	92 897			92 897
Equipment expenses	59 976			59 976
Other Operations				
Payroll	16 855			16 855
Equipment expenses	68 695			68 695
Pipe and wire rope	28 517			28 517
Shop supplies and maintenance	6 620			6 620
Dredge	94 998			94 998
Levee and ditch maintenance	20 772			20 772
Other	1 092			1 092
Miscellaneous				
Payroll taxes	27 635			27 635
Employee benefits	96 326			96 326
Interest	17 852			17 852
Capital Outlay	37 065			37 065
Total expenditures	<u>1 231 853</u>	<u>-</u>	<u>-</u>	<u>1 231 853</u>
Excess (deficiency) of revenues over expenditures	<u>( 348 963)</u>	<u>10 265</u>	<u>34 576</u>	<u>( 304 122)</u>
<b>OTHER FINANCING SOURCES</b>				
Transfers in				-
Transfers out				-
Total other financing sources and uses	<u>-</u>	<u>-</u>	<u>-</u>	<u>-</u>
Net change in fund balances	<u>( 348 963)</u>	<u>10 265</u>	<u>34 576</u>	<u>( 304 122)</u>
Fund balances - beginning	295 268	493 062	1 545 882	2 334 212
Prior period adjustments			2 480	2 480
Fund balances - ending	<u>\$ ( 53 695)</u>	<u>\$ 503 327</u>	<u>\$ 1 582 938</u>	<u>\$ 2 032 570</u>

The accompanying notes are an integral part of these financial statements.