

BOARD OF COMMISSIONERS
SNY ISLAND LEVEE DRAINAGE DISTRICT

2004 ANNUAL NEWSLETTER

REFLECTIONS

Once in a while, it does the soul good to take a step back from the daily, frenetic pace of seemingly endless struggles and challenges that at days end appear to result in a total absence of progress. We've all experienced this feeling, perhaps more often than we care to remember. But let's take this brief moment to imagine what Charles Clark must have thought in the 1860's when he came up with the wild idea of protecting a vast tract of swampland from the frequent rampages of the Mississippi River. He actually had the



audacity to think that this could be done using only wooden scrapers and mules to build a river levee. After all folks, he wasn't talking about a little stream running off the neighboring bluffs winding its way through the bottoms to the river. He was talking about the "Father of Waters", the "Mighty Mississippi". Oh, and incidentally, at that time there were no laws on the books in the State of Illinois that would even allow this type of development to

come about. That didn't matter to Mr. Clark. Why? Because he was a man of vision that when faced with what seemed to be overwhelming odds just rolled up his sleeves and went to work. Because of this man's efforts, the Sny Island Levee Drainage District, along with all the other drainage districts in the State of Illinois, exists today. What a struggle he must have faced. But he saw the possibilities that his work could bring about and today we enjoy the fruits of his labor. The challenges we all face as landowners, staff and Commissioners may pale in comparison to what Mr. Clark faced; and then again maybe they don't. But the stakes are just as high. It's about the existence of the Sny and the opportunities it offers for future generations to experience. Generations that will most likely never know us. It's about a way of life. So much for this year's lesson on the history of the Sny in the 1860's and its impact on our lives. You can read more about the Sny's history in Bill Gard's book **The Sny Story**. Contact our Business Office staff about purchasing your copy. Now, let's take a look at 2004.

SNY DREDGING PROJECT

Initiated in October of 2002, work continues on dredging sand from the Mississippi River and placing it on the land side slopes of our main stem river levee. This year's progress has been slow.

High river stages throughout most of the spring and summer kept crews from starting this year until mid-August. However, progress has been and continues to be made. As of this newsletter,

more than 350,000 cubic yards of sand has been pumped on the Reach II river levee at an estimated cost of slightly less than \$1.00 per cubic yard. In 1998, the Sny paid a private contractor \$2.81 per cubic yard.



To enhance our capabilities for the placement of sand on the levees, we purchased another 1,000' of dredge discharge pipe this year at a cost of \$11,500.00. We can now move material 6,600' from the dredge site to the discharge end. This will greatly improve the efficiency of our operation at each dredge site. We also purchased a spare cutterhead basket at a cost of \$7,325.00 to reduce down time. Required,

intermittent maintenance work on one cutter head basket can now be done in the shop while we continue dredging using the other.

The dredge will continue operating this year until cold weather stops us. The dredge was recently moved to dredge site #4 just north of Murphy's Bay at the south end of Reach II. From this site, the Sny staff is currently placing sand on the river levee just north of

Blackjack Crossing in Reach II. We currently have about 2.2 miles of levee to finish from Blackjack to Kiser Creek along with a short section in the Cincinnati Landing area. If conditions allow we could finish most, if not all of the 6.2 miles of river levee in Reach II next year. At the same time we continue dredging in Reach II, the permitting process



for Reach I will begin. Most of 2005 will be taken up in securing the necessary permit for Reach I. Our goal is to begin dredging at the north end of Reach I in the spring of 2006. The Sny staff associated with the dredging project in the spring, summer and fall are Lewis Wells, dredge operator, Scott McKee and Willard Lynch, heavy equipment operators and Kevin Keithly and Paul Kenady, booster pump operators.

SNY PUMP STATIONS

Our pumping operations were challenged this year with heavy rainfall at the south end of the District in the spring followed by nearly 12" of rain that fell in the Reach I area from August 26 – 29. We have also experienced an unusually wet fall causing pumping operations to continue into November. This is the first time our pump stations have been put into service, at times at full capacity, in November in recent memory. The total pumping capacity of all three stations is 1,100,000 gallons of water per minute.

Pumping operations this year resulted in the District using nearly 200,000 gallons of



diesel fuel and more than 3,000 gallons of engine oil. As I'm sure you are all aware, costs attributed to diesel fuel and engine oil have increased dramatically in the last few years. Just this year alone, our diesel fuel costs at the pump stations increased \$.60/gal over the course of the year. However, our engine oil prices did remain fairly stable during 2004.

Two significant problems occurred at Pump Station 4 this past spring. We experienced a bearing failure in one of the three gearboxes plus we experienced a failure of the station's back-up generator furnishing power to the pump station when main line electricity fails. The gearbox repairs were completed by Awerkamp Machine in Quincy.

Two generators, rated at 10 kw. each, were purchased from the federal government surplus supply warehouse in Springfield. One of these generators was installed at Pump Station 4. The other is being stored for future use.

Pump Station #1 experienced a failure in its engine cooling system for engine #2 in late August during a time that demanded maximum pumping operations. A temporary system was put into use initially to get us through the aftermath of the severe rain event in Reach I that was mentioned earlier in the section. Repairs to these systems are complicated by the fact that each engine's cooling radiators are submerged in the station

pump bays. Once pumping ceased, Sny staff lowered steel plates in front of the pump bay inlet grates. A diver was then secured to assist in completely sealing off the pump inlet using heavy plastic and sandbags. When sealed, Sny water is then pumped from the pump bay using a submersible electric pump. Once the water was pumped out, Sny staff completed necessary repairs to the system. In an effort to prevent future problems, pump bay #1 will be pumped out next spring so a complete inspection of its cooling system can be completed prior to the spring pumping season.

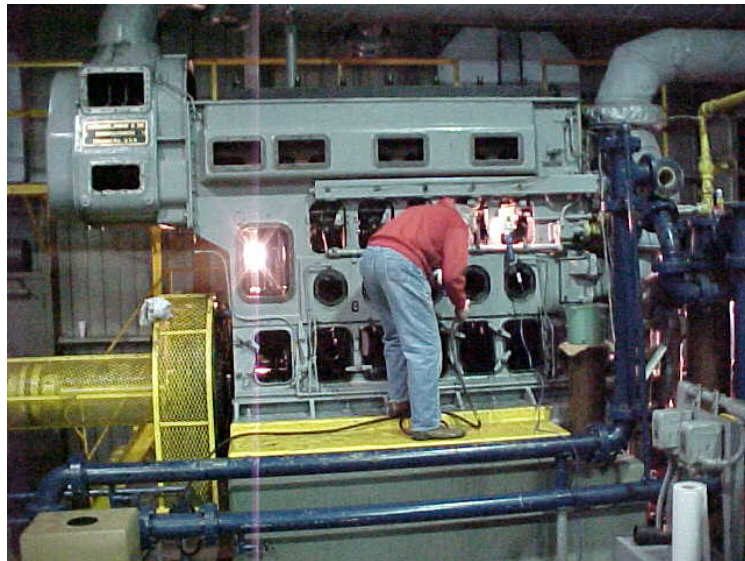
Pump Station 1 - Hull



In January the staff, along with a technician from Fairbanks Morse Engine of Houston, Texas began the process of overhauling two of the three, 800-horsepower diesel engines at Pump Station 3A near Pleasant Hill. Engine #3 underwent a major overhaul first followed by engine #2. The work involved completely tearing down both engines including removal of the upper crankshaft, pistons and cylinder liners. The engine blocks were meticulously cleaned to

remove all carbon buildup, combustion residue and foreign matter. The existing connecting rods and pistons were re-used. New cylinder liners, wrist pin bushings, rod bearings, harmonic balancing pins, bushings and springs were installed. In addition, the timing leads were re-set and the fuel racks and injectors were reconstructed. Total cost of both procedures was more than \$200,000.00. The two procedures were completed in April. In January of 2005 we are scheduled to overhaul the remaining engine at station

3A. Upon its completion, all major components at Pump Station 3A including gearboxes, pumps and engines will have been completely re-built in the last few years. In addition, the cooling system for engine #1 at Pump Station 3A underwent repairs in a similar fashion as repairs described at Pump Station 1.



As can be noted above, every effort is being made by the Commissioners and staff to insure that the District's pumping facilities are maintained at the highest possible level with necessary repairs completed as quickly and professionally as possible. Our fulltime staff managing pumping operations include Warren "Butch" Sturtevant at Pump Station #4 south of Pleasant Hill, Lewis Wells at Pump Station #3A west of Pleasant Hill and Bryan Chapman at Pump Station #1 southwest of Hull.

The Sny near Pump Station 3A will also see another major project in 2005. The Illinois Department of Transportation in cooperation with Calhoun County and the Sny will be constructing a new, modern, concrete decked bridge crossing the Sny north of the existing bridge in that area. This particular bridge is crucial to the effectiveness of our entire drainage system since it facilitates fuel deliveries to Pump Station 3A. The timely completion of this construction project, projected to be early July of 2005, will provide a great



addition to the infrastructure of the drainage district as well as the county. **The existing bridge will remain open with only a 3-ton load limit until the new bridge is completed.** The old bridge will then be removed. The more than \$350,000.00 estimated cost of the new structure is being funded by the State and Calhoun County.

FIELD MAINTENANCE

Did you know that the Sny maintains more than 250 miles of “District waterways”? Did you know that the Sny maintains more than 150 miles of levees? Did you know that the Sny maintains nearly 40 miles of diversion and reservoir approach channels? Did you know that the Sny mows more than 4,000 acres of levees each year? “Butch” Sturtevant was mentioned earlier as the resident pump station operator at Pump Station 4. When



not running his pump station, “Butch” operates the Sny’s John Deere 7710 tractor equipped with an Alamo Machete brush cutter to assist with brush control on “District waterways” during the winter. During the summer and fall, “Butch” is assisted by Paul Kenady and Kevin Keithly in mowing all the Sny’s more than 4,000 acres of levees, diversion channels and reservoir approach channels. The mowing program utilizes two John Deere 7710 tractors equipped with a

15’ Bush Hog mowing unit and a 20’ John Deere mowing unit.

Providing adequate drainage through “District waterways” and installing drainage tubes falls on the shoulders of Scott McKee and Willard Lynch. Much of this work is accomplished with the use of the Sny’s Caterpillar 350L trackhoe purchased in 1997 and Caterpillar D6R XW bulldozer purchased new this year. This particular aspect of



our maintenance operation relies heavily on individual landowners. With more than 250



miles of waterways to keep track of, it's difficult to see every drainage problem that arises throughout the year. If you see a problem in one of these waterways as you work your fields throughout the year, don't hesitate to contact the Sny office immediately. The Sny Superintendent will make every effort to meet with you within a day or two to take a look at the problem. If immediate attention is required, the Sny staff will deal with it as soon as possible. If resolving the problem isn't critical, work on it may

wait until the winter when the Sny's dredging operation stops. However, the Sny staff invites all the assistance possible from landowners to note the condition of "District waterways" crossing their land.

DRAINAGE SUPPLIES

For the convenience of area landowners, we maintain a strong inventory of both Hancor plastic drainage tubes as well as 14-gauge, galvanized tubes at the Sny office in New Canton. We also have in stock bands of all sizes for the galvanized tubes.



The Hancor Sure-Lok tubes do not require bands due to their design. Flapgates for both the galvanized and plastic pipe are readily available at the Sny office. If you happen to require a specialty item such as tee's, elbows or water control attachments, they can be ordered for delivery in just a few days. Whatever your needs, contact us at your convenience so that we might be of service to you. In addition, if while we are cleaning a waterway on your property and you need to have a tube installed as a part of our waterway maintenance, the Sny will install the tube while we are working in that specific

site. We encourage the landowner to play an active roll in sizing the tube for the installation as well as participating in the installation. The Sny cannot be responsible for damage that may occur to the tube during installation and will not guarantee the installation for proper flow. The Sny will also not be responsible for future damage that may happen to the tube as a result of flow as well as damage to crops that result from the installation.

THE SNY BUSINESS OFFICE



The foundation of the system of private and “District” waterways, pump stations and aqueducts upon which our drainage relies is “The Sny Channel”. Without it functioning to a high degree of dependability, our drainage system suffers. In the same manner, the lynchpin of our business operation is our database of land tracts and assessment levels. With more than 5,100 tracts of land assigned to more than 600 landowners,

maintaining the Sny’s database to the degree of accuracy required demands constant attention. The reliability of our database continues to improve because of the professional attention given it by our Administrative Assistant/G.I.S. Specialist Yvonne Billings. While not only maintaining a high level of activity in database work as well as the other business functions of the office, Mrs. Billings has utilized the Sny’s state of the art technology to initiate the process of mapping all of our more than 5,100 land tracts. All assessments will then ultimately be tied to these tracts that are cross-referenced with ownership records in the appropriate county courthouses. This will add yet another layer of reliability and efficiency to our assessment process. You as landowners have and continue to play a key role in this process. If you are a participant in a land transaction within the District, it is incumbent upon you or your legal representative to notify the Sny office of the change as soon as possible. In addition, please take the time to look over your assessment notice when it’s received to help insure its accuracy. If there are questions, don’t hesitate to contact the office immediately. The assistance of you the landowners is invaluable to us as we continue to strive to provide you with efficient, dependable service.

IT'S THE HOLIDAY SEASON!!!

In observance of the upcoming holiday season, the Sny Business Office will be closed December 23, 24, 30 & 31.

We at the Sny want to take this opportunity to thank you for your continued support over the years and wish you and your families all the joy that the coming holiday season has to offer. Merry Christmas and Happy New Year!

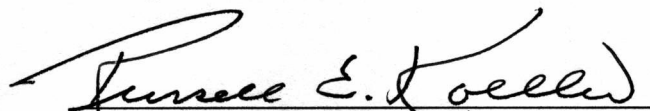


FINANCIAL STATEMENT

The financial report included with this year's newsletter reflects audited figures for the fiscal year ending October 31, 2003.

If you would like to access this year's newsletter electronically, it can be found at <http://www.snyisland.org/newsletter.htm>


George D. Borrowman – President


Russell E. Koeller – Secretary


Jack L. Borrowman - Commissioner

SNY ISLAND LEVEE DRAINAGE DISTRICT
STATEMENT OF REVENUES, EXPENDITURES, AND CHANGES IN FUND BALANCES
GOVERNMENTAL FUNDS
YEAR ENDED OCTOBER 31, 2003

	<u>General Annual</u>	<u>Capital Projects Fund Reserve fund Fall Creek</u>	<u>Permanent Fund Reserve Fund Seepage</u>	<u>Total Governmental Funds</u>
REVENUES				
Assessments	\$ 781 548	\$	\$	\$ 781 548
Material and pipe sales	57 200			57 200
Lease income	9 669			9 669
Farm income	71 376			71 376
Investment earnings	27 344	26 600	68 790	122 734
Miscellaneous	1 974			1 974
Total revenue	<u>949 111</u>	<u>26 600</u>	<u>68 790</u>	<u>1 044 501</u>
EXPENDITURES				
Current:				
General administration				
Payroll	89 691			89 691
Office supplies	7 931			7 931
Building utilities and maintenance	12 027			12 027
Insurance	68 143			68 143
Legal and audit	13 436			13 436
Engineering	20 922			20 922
Farm expense	25 551			25 551
Miscellaneous	28 662			28 662
Pumping Operations				
Payroll	110 273			110 273
Operating expenses	218 126			218 126
Heavy Equipment Operations				
Payroll	95 978			95 978
Equipment expenses	63 619			63 619
Other Operations				
Payroll	8 940			8 940
Equipment expenses	77 339			77 339
Pipe and wire rope	47 463			47 463
Shop supplies and maintenance	8 716			8 716
Brush killer	8 581			8 581
Levee and ditch maintenance	7 167			7 167
Other	9 472			9 472
Miscellaneous				
Payroll taxes	26 242			26 242
Employee benefits	98 215			98 215
Capital Outlay	56 626			56 626
Total expenditures	<u>1 103 120</u>	<u>-</u>	<u>-</u>	<u>1 103 120</u>
Excess (deficiency) of revenues over expenditures	<u>(154 009)</u>	<u>26 600</u>	<u>68 790</u>	<u>(58 619)</u>
OTHER FINANCING SOURCES				
Transfers in	163 089			163 089
Transfers out			(163 089)	(163 089)
Total other financing sources and uses	<u>163 089</u>	<u>-</u>	<u>(163 089)</u>	<u>-</u>
Net change in fund balances	9 080	26 600	(94 299)	(58 619)
Fund balances - beginning	595 439	455 145	1 614 157	2 664 741
Prior period adjustments	70 736			70 736
Fund balances - ending	<u>\$ 675 255</u>	<u>\$ 481 745</u>	<u>\$ 1 519 858</u>	<u>\$ 2 676 858</u>

The accompanying notes are an integral part of these financial statements.